

Introduction from Bishop Sophie

Thank you for taking time to read through this profile and discern if God might be prompting you to apply. St Philip's, Potters Green and St Chad's, Wood End are two wonderful parishes within the Coventry East Deanery. Each parish aims to share God's transforming love, by serving those in their community. Both churches have been in an interregnum for a few years and are now ready to welcome a new leader who can support the uniqueness of both parishes and work alongside the laity within each setting.

This new season will require a gifted colleague who will support the development of a new team, including a new Growing Faith Worker. They will be strong in discipleship, and have confidence in mission, so that they can carry the love of God to a community, with some high levels of deprivation, with associated issues including poor mental health, and anxieties. You can be confident of finding a team of wonderful people, a set of supportive clergy colleagues, and a diocese that is working towards restored health, new growth and renewed relationships. This is a new and exciting collaboration between the parishes and an opportunity for the right person to shape the ministry in this area.

I warmly commend this post for your prayerful consideration.



Rt Rev Sophie Jelley
Bishop of Coventry

From the Area Dean

This is an exciting opportunity to serve two neighbouring churches, each with its own distinctive style of Sunday worship. After a period of interregnum, both congregations are prayerfully seeking a priest who will journey with them, offering spiritual leadership, encouragement, and care.

The parishes sit side by side and share a heart for their local community. We envisage this role growing a supportive and collaborative team, working alongside local agencies and charities, including City Mission, which is already well established based on the parish boundary.

This post offers a genuine blank canvas: an invitation to nurture and love these communities, to explore new possibilities together, and to make God known in the wider neighbourhood. It is a wonderful opportunity for someone with vision, compassion, and faith to help shape the next chapter of the parishes shared life.

You would be part of Coventry East, it is an exciting and varied place in which a multi-cultural mix of people live and worship. We are the most deprived deanery in the diocese. This brings its own set of challenges but also opportunities as can be seen in the varied way each church is seeking to build the kingdom but such joy.

We comprise ten parishes, and a diocesan resource church, St Marks, which is revitalising its local parish church and supporting two new plants. University Hospital of Coventry and Warwickshire is a very prominent employer and resource within the deanery.

Coventry is a city of sanctuary and has resettled more refugees than any local authority, many of whom live in our deanery. Coming to Coventry East, means joining a friendly and supportive chapter and synod. Because the deanery is only 16 square miles our chapters are well-attended, and others are close by which is great if you need help or want to collaborate on projects.

This is a post that will naturally develop and evolve over time and we look forward to welcoming our new colleague to Coventry East.



Vicar of Wood End and Priest in Charge of Potters Green

We are two neighbouring parishes, each with its own character and strengths, prayerfully seeking a vicar who will care for both communities and help us grow in faith, hope, and love.

Recently, we had a vicar on placement across the two churches. On Sundays, he established a rhythm of attending the breakfast club at Wood End, followed by the Eucharistic service there, and then leading a more charismatic Eucharist at Potter's Green. Both churches are blessed with capable and committed lay teams who are able, when required, to lead a Service of the Word. With the encouragement and support of a vicar, these teams have the opportunity to be sustained, strengthened, and enabled to flourish in their shared ministry, building on the growing patterns of collaboration between the two churches.

Our Shared Longing

Across both parishes, we yearn for a vicar who:

- Embodies the teachings of Jesus and helps us live them out in today's world
- Preaches the Gospel in ways that speak to individuals, families, and the wider community
- Supports us in facing challenges, criticism, or discouragement with a Christ-like heart
- Nurtures and uplifts our shared journey of faith through gentle, wise, and compassionate guidance

We are praying for someone who is:

- Bubbly, warm, and approachable
- Modern, relatable, and non-judgemental
- Great with children and young people
- Flexible, well organised, and confident with IT and digital tools
- Non-political, with strong time management skills
- Open, honest, and knowledgeable about safeguarding and support needs

Our Hopes for the Future

Together, we pray for an enthusiastic vicar who will:

- Work within the wider community, including local schools
- Help grow the congregations in faith, number, and confidence
- Encourage children, young people, and families to engage fully in church life
- Offer both spiritual and practical guidance
- Help us form and strengthen our communities through collaborative action and shared vision
- Encourage spiritual growth through small groups and courses such as The Chosen, Barnabas, and other teaching opportunities

- We hope to see our churches remain happy, safe, and thriving places of worship — where older members feel secure and valued, younger generations are welcomed and encouraged, and more people from the community come to discover their faith.
- We long for both St Chad's and St Philip's to be beacons of light in their communities, and we warmly invite the right person to help us shape this next chapter together.

Personal Specification

- We are seeking a leader who is deeply grounded in the Gospel, able to guide both parishes with wisdom and distinction — valuing their shared purpose while nurturing their individual identities.
- A leader who can work creatively with external partners to support and resource families.
- Ideally, someone with experience or a deep passion for Estate Ministry.
- Someone with experience of building a team around them and managing others effectively.
- A collaborative team player who is also a self-starter, able to take initiative and inspire others.
- Someone who can encourage and enable worshippers to use their gifts and talents fully and joyfully.
- A person with a good sense of humour, able to work calmly under pressure and hold tensions within the community with grace and sensitivity.
- They will also be committed to playing a full and active part in the life of the Deanery and Chapter.



PARISH PROFILE

ST PHILIP DEACON AND EVANGELIST CHURCH – POTTERS GREEN

St Philip's is a welcoming, relaxed, and caring church with a strong sense of belonging and family. We have a shared ministry, with many members actively involved, and we value being nurturing and supportive across generations.

Having been without a Priest-in-Charge since May 2022, we recognise our need for clear leadership and direction. We are particularly keen to expand outreach, especially with children and young people, to grow and secure the future of the church. While we are honest about the challenges we face — including an ageing congregation and the risk of decline — we remain deeply committed to worship, service, and continuing as an active church in our community.



Our Mission Statement

"Let your light shine before others, that they may see your good deeds and glorify your Father in heaven."

The Parish

Potters Green is a parish of approx. 4000 people. The parish has a mix of housing - the majority is owner occupied, with some private landlords and social housing. Although not wealthy the parish does not have high levels of deprivation. The numbers of people living in social housing is lower than average as is the number of people living alone. As well as the church in Potters Green there is also a community centre, Potters Green Primary School, the Grace Academy School, a GP practice and a row of mixed purpose shops.

The Church building

St Philip's was built in the 1960s, the church building is a large flexible space. Corridors connect the building to the church hall. The toilets and kitchen are in good condition. There is a small garden in the centre of the church which is looked after by members of the congregation and useful for church events in the summer. The church has a good-sized car park. The Coventry Worship Centre hire St Philip's On Sunday afternoons for their worship services and Sunday School. The church hall and building are in very regular use - a dancing school, Scouts, Cubs, Beavers, Tiny Tots Stay and Play Group and Slimming World.





St Philip's is 'A charismatic evangelical church' where everyone is encouraged to share in the ministry of the church. Where we can learn to put our faith into action and enjoy being in the family of God. We have a congregation of between 25 and 36 adults attending each week. Between 1 and 6 children. The church congregation is ethnically diverse.

Music and fellowship are an important part of St Philip's worship. There is lay participation in the services, reading the Bible passages, leading intercessions.

A strength of St Philip's is our active encouragement of everyone called to take part in ministry no matter what their age or experience. We promote the inclusion of all members helping them to see what they as an individual can do and valuing that contribution, however big or small. We try to guide people towards opportunities to help and provide support to aid their development.

We want to encourage even greater involvement with the worship strengthening the music and use of technology. Our churchwarden and more experienced church members are working in this area during this time of interregnum.

We believe passionately in the development of lay leaders and seek an ordained leader who will enable and encourage this further.

The congregation at St Philip's believe in the **power of prayer**. There is a culture of personal prayer and Bible reading at St Philip's. Members of the congregation receive and use 'Daily Bread' and 'Word for Today' resources. We regularly pray for individuals for healing or for family relationships and different challenging situations in their lives.

St Philip's has stood in the evangelical tradition since it was founded. It has a heart for mission and aims to bring people into a personal relationship with Jesus. We are united in our love of God, our willingness to serve and in sharing His word. St Philip's is guided by prayer seeking to do what we have been called to do.

St Philip's is a friendly church with a relaxed atmosphere that is open to all. St Philip's church has a loving ethos which is supportive to one another, noticing when a face is missing or when someone needs help or prayers. St Philip's enjoy refreshments after Sunday service catching up and taking the opportunity to welcome newcomers or visitors to the church.

St Philip's is blessed with people with gifts in leading, preaching, technology, administration, managing accounts, reading, listening, practical DIY skills, offering transport and those sharing experience. This, particularly during this extended period of interregnum, allows many aspects of church life to be performed by one of our own members with the love, support and encouragement of the wider church body.

The wider community - Woodway Lodge is a care home and is situated very close to the church. The home includes four beds for adults under 65 with learning disabilities. The four men living at Woodway Lodge have regularly attended St Philip's with their carers on Sunday mornings. The St Philip's congregation know these men and welcome them. During a curacy leadership project providing the leadership of a minister working with us for just a few weeks - a small group from St Philip's visited the care home on 20th December 2023 for a carols and craft afternoon.



Easter 2024

for him to receive support in terms of pots and pans and English lessons. The gentleman has continued to attend St Philip's every week and the congregation have supported and welcomed him managing to communicate despite very limited English. The man had come to faith in Iran, completed Alpha courses in Ipswich and was now keen to be baptised. His baptism took place 10th December 2023 in a Sunday morning service at St Philip's.



We do recognise, however, that we need help making more of a practical difference in our community. We want to reach out to new housing parish to let them know our church is welcoming.

Refugee ministry and baptism - in December 2023 a refugee attended St Philip's for the first time. He had very limited English and had been moved from Ipswich to Coventry. His church leaders in Ipswich had helped him to find St Philip's online. The church community at St Philip's were very quick to welcome him. Our churchwarden spoke on the phone to the man's previous church leader in Ipswich. One member of St Philip's is a volunteer with the charity Carriers of Hope which works in Coventry to support refugees and Asylum Seekers. She organised



Christmas 2024

Bereavement Ministry - Every year in December the church has a service called 'Christmas Without a Loved One' this is an evangelistic service aimed at people in the community who have faced bereavement. The churchwarden at St Philip's, Jonathan Ashton worked for a funeral director and has a wealth of experience in working with the bereaved. One of the families who joined the church during the interregnum did so following a funeral and the support they received from the church after the bereavement. There is missional potential at St Philip's with funeral ministry and bereavement ministry.



Fish and Chip Supper August 2025

running of this Alpha course, they are willing to support with both time and money.

Alpha course - During a six-week curacy leadership project in Nov/Dec 2023 a mini Alpha course and confirmation class was run. This was agreed to and supported by the PCC. Nine people came forward wanting to be confirmed, five teenagers and four adults. One of the adults, after attending a couple of sessions of the course, decided not to get confirmed yet, he said he is still working out what he believes but would like to get confirmed at a later date. Eight decided to get confirmed.

There is a core group for a youth group in this church and if the church had the capacity to run a youth group they would attend. The churchwarden and members of the church attended to support the Alpha course. The church and PCC were very supportive of the

The congregation is prayerful and longs to see God move amongst them. We are welcoming to new people and ready to move forward. In 2013 Bishop Christopher described St Philip's as "continuing with remarkable resilience and determination during another period of interregnum. They have regained their earlier confidence and are looking forward to the future positively" This surely still describes our situation in 2025.

St Philip's sees necessary change as a positive experience. The church has undergone many changes in its history and has grown stronger through these experiences and we believe this will happen again. We hope that we can identify merit in what is currently working and at the same time evaluate what needs to be improved.

The church needs a relational leader who is able to take care of and lead the current congregation as well as build missional links with the community. A leader who will work with us prayerfully to discern God's vision for areas of growth in the church and who has the ability to develop and implement that vision.

Finally, from a member of our congregation:

"We are hoping for a spirit filled vicar, handpicked by God for us"



Financial Information from End of Year Report 2024

General Income:	£48,520
Cash in Bank on 1 st January 2024:	£29,210
Gift Aid recovered:	£2,471
Hall Hire Receipts:	£21,918

We give 10% of our income to charity - in 2024 that was £4,880.00.

Expenses:	£24,163
There were no major expenses.	
Parish Share:	£13,500
A roof repair	£540
Outside notice board	£228
Purchase of a piano (with a grant of £500.00)	£759

Clergy expenses have always been paid in full.

Full copy of accounts can be made available.

PARISH PROFILE

ST CHAD'S CHURCH - WOOD END

St Chad's longs for a vicar who will inspire and encourage us as we seek to live out our faith in today's world. We value thoughtful preaching, pastoral care, and a warm, joyful presence who will walk with us through both challenges and celebrations, helping us grow together as disciples of Christ.



Colossians 3:12–15

"Therefore, as God's chosen people, holy and dearly loved, clothe yourselves with compassion, kindness, humility, gentleness and patience. Bear with each other and forgive one another... And let the peace of Christ rule in your hearts, since as members of one body you were called to peace. And be thankful." This reading embodies the heart of St Chad's — compassionate, humble, forgiving, united, and thankful.



St Chad's is a small but deeply spiritual community — a sanctuary of peace, reflection, and togetherness. It's a place where anyone, regardless of background, can come to worship Jesus, the Son of God, and find both stillness and strength in faith. Here, we celebrate not just tradition, but transformation. Our doors are open to individuals, families, and communities who seek belonging, purpose, and spiritual growth. St Chad's is where prayers are shared, support is given, and the journey of faith is walked together.



Our Spirit and Vision

St Chad's stands for:

- Welcome and Inclusivity: A safe and loving space for everyone
- Faithful Learning: A desire to grow deeper in our understanding of Jesus' lessons
- Community Care: Helping one another in times of need and sharing joy in moments of celebration
- Spiritual Maturity: Empowering each member to live out their faith with confidence, humility, and courage

A Church in Motion: Growing and Serving

Our congregation is experiencing significant growth, and so is our presence in the wider community. The name "St Chad's" is becoming synonymous with compassion, hope, and celebration. We're proud to host and support a rich variety of initiatives:

- Meals and Events: Sharing joy through special occasions and regular gatherings
- Outreach and Youth Work: Including AXIOS Youth Club, Scouts, Beavers, and Shining Lights
- Family Support: Nursery connections, Citizen Housing (Santa's Grotto), and partnerships with WERAF (Woodend Residents and Friends)
- Hospitality and Generosity: From our Clothing Bank and donations to the Air Ambulance, to fun-raising (not just fundraising!) activities like toy and clothes drives for families in need, regardless of faith or background

- Spiritual Milestones: Baptisms, weddings, funerals — all celebrated with love and reverence



St Chad's is embedded in the community — not just for worship, but as a hub for support, food, advice, and fellowship
We rebuild strong connections with local groups, businesses, and schools, working together in unity
Children's Church is thriving again — a space where children can eat, learn Bible stories, and simply be themselves
We can take children on trips, supported by the congregation
The play area at the back of the church is restored and filled with laughter once more

How we'll work together

We believe in shared leadership and mutual support. We will:

Be approachable and open

Guide and support with love

Share the workload

Help the vicar understand our area, people, and communities



2024 Finance Summary

Planned giving	£16,454
Collections at services	£702
All other giving	£2,228
Gift aid recovered	£0
Total giving	£19,384
Fundraising	£0
Trading	£675
Gift aid recovered	£0
PCC Fees	£544
Other income	£7,230
Income	£35,713
Mission giving & donations	£0
Parish share paid	£7,000
Salaries & expenses	£1,446
Church running expenses & utilities	£21,987
Other expenditure	£10,062
Legacies	£0
Grants	£7,880
Capital expenditure	£2,151
Expenditure	£42,646
Unrestricted	£191,368
Restricted	£0
Net Current Assets and Investment Balances	£191,368

Vicarage

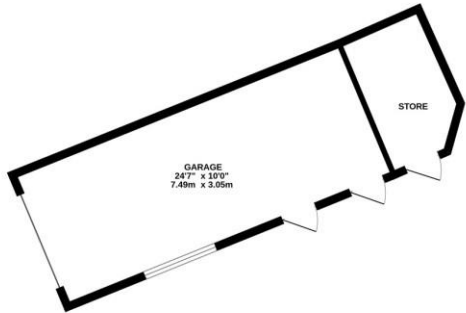
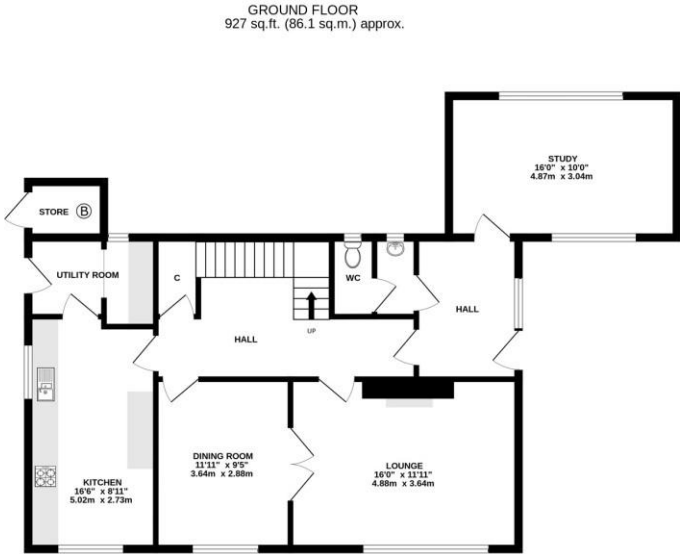


The vicarage is located directly next to Potters Green church. It has four good sized bedrooms, a sitting room, study, garage, a small garden and off-street parking.

Images of Potters Green Vicarage



Layout



St Phillip's Vicarage
Ringwood Highway, Coventry, CV2 2GF

16th December 2022

TOTAL FLOOR AREA : 1978 sq.ft. (183.8 sq.m.) approx.

Whilst every attempt has been made to ensure the accuracy of the floorplan contained here, measurements of doors, windows, rooms and any other items are approximate and no responsibility is taken for any error, omission or mis-statement. This plan is for illustrative purposes only and should be used as such by any prospective purchaser. The services, systems and appliances shown have not been tested and no guarantee as to their operability or efficiency can be given.

Made with Metropix ©2022

Further Information

For further details and an application form please contact:

Debbie Niblett, HR Officer and Archdeacons' Administrator by email to Debbie.Niblett@Coventry.Anglican.org

For informal conversations, please contact:

Area Dean, Rev Canon Claire McArthur on tel: 07532 260027 or revclairestoke@gmail.com

An application form can be downloaded from the Diocesan Website:

<https://coventry.anglican.org/who-are-we/vacancies/currentvacancies/clergy-vacancies.php>

An Enhanced DBS disclosure is required for this post